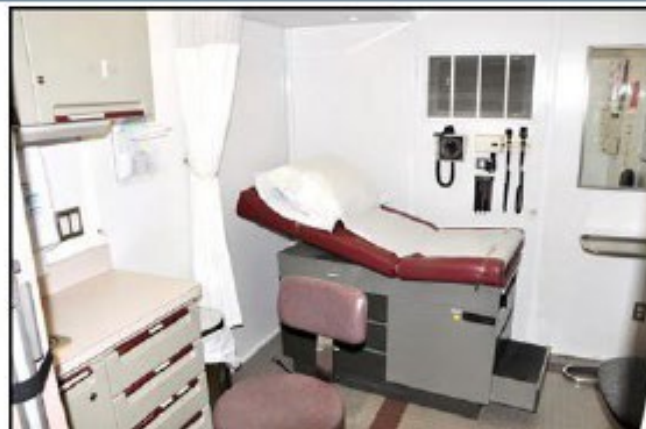


Mobile Dialysis



Mobile Clinic



Silvercross Living Well Initiative

Applying Modern-Day Technology in Dialysis

PRESENTED BY:

ESE ONEMIYE, FOUNDER/CEO
SILVERCROSS HEALTHCARE, DIALYSIS
& DIAGNOSTIC CENTER

20 DURBAN ST, WUSE II, ABUJA
NIGERIA

TEL: +234 909 677 7013

CELL: +1 773 240 3393

EMAIL: SILVERCROSSHCDC@GMAIL.COM

Introduction

Our primary focus at Silvercross Healthcare is to:

- ❑ Promote access to quality, affordable, & accessible healthcare and improve the quality of life in patients suffering from chronic kidney disease (CKD) & End Stage Renal Disease (ESRD).
- ❑ Expand access to Hemodialysis treatments, renal replacement therapies, and medications in underserved populations.
- ❑ Promote public education, preventive programs, and advocacy efforts in partnership with other stakeholders to find sustainable solutions to the devastating kidney disease outcomes in Nigeria.
- ❑ Promote access to holistic interventions, self-care, mental health management interventions, and resources to support patients suffering from chronic diseases, their families, and caregivers.

The Problem



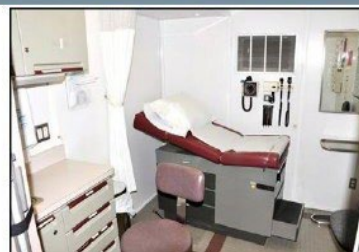
- ❑ An estimated 15% of hospital admissions in Nigeria are attributed to CKD, and access to hemodialysis interventions remains insufficient
- ❑ 34,000 healthcare facilities in the Country however, only 80 of these facilities are actively functioning hemodialysis centers
- ❑ The financial cost of hemodialysis treatments remains unaffordable. The average cost of 1 dialysis session is estimated at N40,000 (\$47), which is currently more than the country's official minimum wage.
- ❑ The economic, political, manpower, infrastructure, equipment, and behavioral challenges in Nigeria play a significant role in the limitations to availability, affordability, and accessibility of hemodialysis treatments.

The Solution

Mobile Dialysis

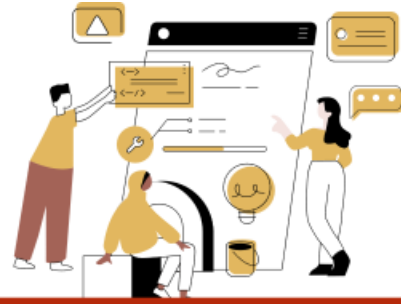


Mobile Clinic



Our Silvercross Living Well Solution will utilize technology and renewable energy to promote access to affordable hemodialysis treatments delivered in the patients' homes and other strategic locations within target underserved populations.

- ❑ The treatments will be delivered within our In-house facility and via mobile dialysis & diagnostic centers powered and sustained by renewable energy.
- ❑ The initiative will also provide access to holistic interventions to help alleviate patient and caregiver fatigue and Stress management.
- ❑ It will provide technology-delivered access to self-care, mental health management interventions and counseling and social work services
- ❑ Reduce the financial and emotional burden of the impact of Chronic Kidney disease to patients and their families.



THE MARKET

- ❑ Currently, in Nigeria, there are no mobile dialysis treatment services available. The Project will be the first private, commercial, and routine source of mobile dialysis access in the region.
- ❑ The mobile medical/dialysis vehicles will serve homebound and underserved patient populations. Silver Cross Living Well Initiative plans to begin service in the most heavily populated underserved communities in our surrounding northern region.

Business Model

- ❑ Silvercross has generated a revenue of approximately \$18,000 USD and grown a patient base of approximately 246 patients within 12 months.
- ❑ Projection of approximately 4000 dialysis treatments per year with a projected average increase of 25% in treatments delivered in the next 3 years.
- ❑ The project anticipates coordinating with local government entities in target communities
- ❑ Establish ongoing relationships with referring physicians within the target market and hospitals lacking dialysis treatment capabilities.
- ❑ Maintain a modest marketing presence among the general public.

Cost Projections

Phase 1: Cost Projection – \$60,000

- ❑ Purchase 3 Hemodialysis Machines in our in-house facility and power and sustain these machines via renewable energy.

Phase 2: Cost Projection - \$160,000 (1 Mobile Dialysis Clinic)

- ❑ The project will implement 3 mobile dialysis clinics in phases over a 5-year period. One (1) mobile dialysis clinic estimated projected acquisition cost of \$160,000

We estimate the total capital expenditure for the one (1) specialty medical vehicle will total approximately \$1.1 million over a ten-year horizon. The estimate assumes no capitalized repairs/maintenance or vehicle losses during the ten-year operating horizon.

Revenue Projections

Revenue will be generated through:

- Monthly Membership Subscriptions
- Direct Payment for Services Rendered
- Partnerships with Health Insurance Schemes
- Partnerships with other private healthcare providers
- Partnerships with Local and State Government entities.

The project is estimated to break even in year 3

The Project Team

Our team comprises of highly knowledgeable and experienced healthcare professionals, Project Managers, Architect, Engineers, Software Developers, Information Technology Experts, and Administrative Staff.

Ese Onemiye, Founder/CEO

Master of Science: Public Health, University of Liverpool, UK

Bachelor of Science: Microbiology - University of Lagos

Project Management Institute – Certified Project Management Professional

Green Belt Six Sigma Practitioner – Villanova University

Certified Scrum Master- Scrum Alliance

Strategic Risk Administration Training

Project Management Training- Project Management College, UK

Ese Onemiye has over 15 years' experience working on healthcare policies and projects with a passion for creating innovative solutions and a deep understanding of how technology impacts healthcare. She has led various capacity-building programs, health education, and social protection initiatives for the private and public health sectors. She has attended several conferences and workshops and explored various opportunities for healthcare restructuring and delivery in Africa.

She is experienced in providing specialist advice on hospital projects, performing due diligence, and assessing the viability of potential investments in health and education in Nigeria. Over the last ten years, Ese Onemiye has also provided consulting services in drug development programs for various Pharmaceuticals and Biopharmaceuticals in the United States by supporting clinical research trials across multiple therapeutic areas.



MOBILE DIALYSIS CLINIC

THANK YOU

Ese Onemiye

silvercrosshcdc@gmail.com

WhatsApp: +234 909 677 7013

Cell: +1 773 240 3393